

WDU 16N**Weidmüller Interface GmbH & Co. KG**

Klingenbergstraße 16

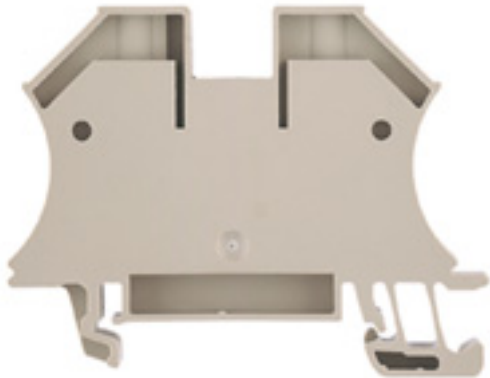
D-32758 Detmold

Germany

Fon: +49 5231 14-0

Fax: +49 5231 14-2083

www.weidmueller.com



The versatile and extensive range of products - from 0.05 mm² to 300 mm² - means that you have diverse options for your applications at your disposal.

Hardened steel for mechanical strength and high-quality tinned copper for optimum conductivity. All materials comply with RoHS requirements and have been tested to current environment guidelines.

General ordering data

Order No.	1036100000
Type	WDU 16N
Version	Feed-through terminal, Rated cross-section: 16 mm ² , Screw connection, Direct mounting, Beige
GTIN (EAN)	4008190273217
Qty.	50 pc(s).

WDU 16N**Weidmüller Interface GmbH & Co. KG**

Klingenbergstraße 16

D-32758 Detmold

Germany

Fon: +49 5231 14-0

Fax: +49 5231 14-2083

www.weidmueller.com

Technical data**Dimensions**

Length	60 mm	Width	12 mm
Height	46.5 mm	Height of lowest version	47 mm
Weight	24.85 g	Net weight	24.08 g

Temperatures

Operating temperature		Storage temperature	
Continuous operating temp., min.	-50 °C	Continuous operating temp., max.	120 °C

2 clampable wires (H05V/H07V) same cross-section (rated connection)

Wire connection cross section, finely stranded, two clampable wires, min.	1.5 mm ²	Wire cross-section, finely stranded, two clampable wires, max.	4 mm ²
Wire connection cross section, finely stranded with wire-end ferrules DIN 46228/1, 2 clampable wires, min.	1.5 mm ²	Wire connection cross section, finely stranded with wire-end ferrules DIN 46228/1, 2 clampable wires, max.	4 mm ²

Additional technical data

Explosion-tested version	No	Installation advice	Direct mounting
Number of similar terminals	1	Open sides	closed
Type of mounting	Snap-on		

CSA ratings data

Certificate No. (CSA)	200039-1057876	Voltage size C (CSA)	300 V
Voltage size D (CSA)	600 V	Current size C (CSA)	70 A
Current size D (CSA)	5 A	Wire cross section max. (CSA)	6 AWG
Wire cross section min. (CSA)	14 AWG		

Clampable wires (rated connection)

Type of connection	Screw connection	Stripping length	12 mm
Blade size	1.0 x 5.5 mm	Connection direction	on side
Number of connections	2	Clamping range, rated connection, min.	1.5 mm ²
Clamping range, rated connection, max.	25 mm ²	Clamping screw	M 4
Tightening torque, min.	1.2 Nm	Tightening torque, max.	2.4 Nm
Torque level with DMS electric screwdriver	4	Gauge to IEC 60947-1	B7
Wire connection cross section, solid core, max. rated connection	1.5 mm ²	Wire connection cross section, solid core max. rated connection	16 mm ²
Wire connection cross section, stranded, rated connection, min.	1.5 mm ²	Wire connection cross section, stranded, rated connection, max.	25 mm ²
Wire connection cross section, finely stranded, max.	16 mm ²	Wire connection cross-section, finely stranded, min.	1.5 mm ²
Wire connection cross section, finely stranded with wire-end ferrules DIN 46228/1, rated connection, min.	1.5 mm ²	Wire connection cross section, finely stranded with wire-end ferrules DIN 46228/1, rated connection, max.	16 mm ²
Cross-section for connected conductor, finely stranded with wire-end ferrules and plastic collars DIN 46228/4, rated connection, min.	1.5 mm ²	Wire connection cross-section, finely stranded with wire-end ferrules and plastic collars DIN 46228/4, rated connection, max.	16 mm ²
Wire connection cross section AWG, min.	AWG 14	Wire connection cross section AWG, max.	AWG 6

Creation date August 15, 2012 5:46:28 PM CEST

Catalogue status 20.05.2012 / We reserve the right to make technical changes.

WDU 16N**Weidmüller Interface GmbH & Co. KG**

Klingenbergstraße 16

D-32758 Detmold

Germany

Fon: +49 5231 14-0

Fax: +49 5231 14-2083

www.weidmueller.com

Technical data**Rated data**

Rated cross-section	16 mm ²	Rated voltage	690 V
Rated impulse withstand voltage	8 kV	Rated current	76 A
Current at maximum wires	101 A	Standards	IEC 60947-7-1
Pollution severity	3		

UL ratings data

Certificate No. (UR)	E60693VOL1SEC38	Voltage size C (UR)	300 V
Current size C (UR)	70 A	Conductor size Factory wiring max. (UR)	6 AWG
Conductor size Factory wiring min. (UR)	14 AWG	Conductor size Field wiring max. (UR)	6 AWG

Material data

Material	Wemid	Colour	Beige
Flammability class UL 94	V-0		

System specifications

Type of connection	Screw connection	Connection direction	on side
Number of levels	1	Number of connections	2
No. of clamping points per level	2	Levels cross-connected internally	No
End cover plate required	No		

Classifications

ETIM 2.0	EC000897	ETIM 3.0	EC000897
UNSPSC	30-21-18-11	eClass 4.1	27-14-11-20
eClass 5.1	27-14-11-20	eClass 6.0	27-14-11-20
eClass 7.0	27-14-11-20		

Product information

Descriptive text technical data	AWG 6/7 and H07V-R25 tighten with a tightening torque of 1.5 Nm.
Descriptive text accessories	Socket and test plug, see section "W-Series accessories".

Approvals

Approvals



Data sheet...

WDU 16N

Weidmüller Interface GmbH & Co. KG
Klingenbergstraße 16
D-32758 Detmold
Germany
Fon: +49 5231 14-0
Fax: +49 5231 14-2083
www.weidmueller.com

Drawings

