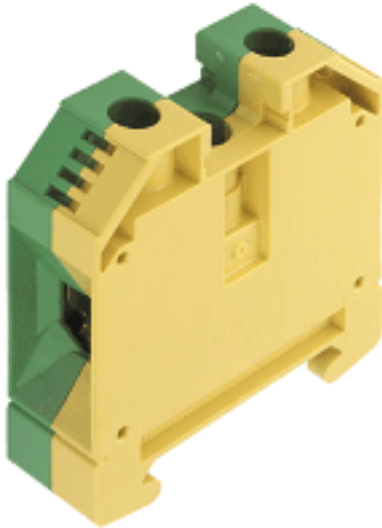


**W-series terminal with clamping yoke connection  
WPE 35**

Weidmüller Interface GmbH & Co. KG  
Klingenbergstraße 16  
D-32758 Detmold  
Germany  
Fon: +49 5231 14-0  
Fax: +49 5231 14-2083  
www.weidmueller.com



The PE terminals are available in two designs: standard and compact (N), with rated cross-section from 1.5 mm<sup>2</sup> to 150 mm<sup>2</sup> (e.g. 2.5 mm<sup>2</sup> – WPE 2.5 or 4 mm<sup>2</sup> – WPE 4N).

**General ordering data**

Order No.	<a href="#">1010500000</a>
Type	WPE 35
Version	W-series terminal with clamping yoke connection, Earth terminal, Rated cross-section: 35 mm <sup>2</sup> , Screw connection, Direct mounting
GTIN (EAN)	4008190112806
Qty.	25 pc(s).

**W-series terminal with clamping yoke connection  
WPE 35**

Weidmüller Interface GmbH & Co. KG  
Klingenbergstraße 16  
D-32758 Detmold  
Germany  
Fon: +49 5231 14-0  
Fax: +49 5231 14-2083  
www.weidmueller.com

**Technical data****Dimensions**

Length	56 mm	Width	16 mm
Height	62.5 mm	Height of lowest version	63 mm
Weight	82.84 g		

**Temperatures**

Operating temperature	Storage temperature
-----------------------	---------------------

**Rated data IECEx/ATEX**

Certificate No. (ATEX)	KEMA98ATEX1683U	ATEX certificate	KEMA98ATEX1683U_d.pdf
ATEX certificate	KEMA98ATEX1683U_e.pdf	IEC Ex certificate	IECExULD05.0008U_e.pdf
Wire cross section max. (ATEX)	35 mm <sup>2</sup>	Voltage, cross-connection	CrossConnectionGuide.pdf
Operating temperature range	For operating temperature range see EC Design Test Certificate / IEC Ex-Certificate of Conformity	Marking EN 60079-7	Ex e II
Marking ATEX Directive 94/9/EC	II 2 G D		

**Additional technical data**

Explosion-tested version	Yes	Installation advice	Direct mounting
Number of similar terminals	1	Open sides	closed
Type of mounting	Screwed		

**CSA ratings data**

Certificate No. (CSA)	200039-1352963	Wire cross section max. (CSA)	2 AWG
Wire cross section min. (CSA)	12 AWG		

**Clampable wires (rated connection)**

Type of connection	Screw connection	Stripping length	18 mm
Blade size	6.5 x 1.2 mm	Connection direction	on side
Number of connections	2	Clamping range, rated connection, min.	2.5 mm <sup>2</sup>
Clamping range, rated connection, max.	35 mm <sup>2</sup>	Clamping screw	M 6
Tightening torque, min.	5 Nm	Gauge to IEC 60947-1	B8
Wire connection cross section, solid core, max. rated connection	2.5 mm <sup>2</sup>	Wire connection cross section, solid core max. rated connection	16 mm <sup>2</sup>
Wire connection cross section, stranded, rated connection, min.	2.5 mm <sup>2</sup>	Wire connection cross section, stranded, rated connection, max.	35 mm <sup>2</sup>
Wire connection cross section, finely stranded, max.	35 mm <sup>2</sup>	Wire connection cross-section, finely stranded, min.	2.5 mm <sup>2</sup>
Wire connection cross section, finely stranded with wire-end ferrules DIN 46228/1, rated connection, min.	2.5 mm <sup>2</sup>	Wire connection cross section, finely stranded with wire-end ferrules DIN 46228/1, rated connection, max.	35 mm <sup>2</sup>
Cross-section for connected conductor, finely stranded with wire-end ferrules and plastic collars DIN 46228/4, rated connection, min.	2.5 mm <sup>2</sup>	Wire connection cross-section, finely stranded with wire-end ferrules and plastic collars DIN 46228/4, rated connection, max.	35 mm <sup>2</sup>
Wire connection cross section AWG, min.	AWG 12	Wire connection cross section AWG, max.	AWG 2

**Dimensions**

TS 35 offset	32 mm
--------------	-------

## W-series terminal with clamping yoke connection WPE 35

Weidmüller Interface GmbH & Co. KG  
Klingenbergstraße 16  
D-32758 Detmold  
Germany  
Fon: +49 5231 14-0  
Fax: +49 5231 14-2083  
www.weidmueller.com

### Technical data

#### Rated data

Rated cross-section	35 mm <sup>2</sup>	Rated voltage to adjoining terminal	800 V
Rated impulse withstand voltage to adjacent terminal	8 kV	Standards	IEC 60947-7-2
Pollution severity	3		

#### UL ratings data

Certificate No. (UR)	E60693VOL1SEC38	Conductor size Factory wiring max. (UR)	2 AWG
Conductor size Factory wiring min. (UR)	12 AWG	Conductor size Field wiring max. (UR)	2 AWG

#### Material data

Material	Wemid	Colour	yellow, green
Flammability class UL 94	V-0		

#### System specifications

Product family	W-series terminal with clamping yoke connection	Type of connection	Screw connection
Connection direction	on side	Number of levels	1
Number of connections	2	No. of clamping points per level	2
Levels cross-connected internally	No	Mounting rail	TS 35
End cover plate required	No		

#### PE rating data

Centre screw on PE terminals	M 4	PEN function	Yes
Pollution severity	3	Rated cross-section	35 mm <sup>2</sup>
Rated short-time current	4200 A (35 mm <sup>2</sup> )	Standards	IEC 60947-7-2
Tightening torque range for fixing screw	1.2...2.4 Nm		

#### Classifications

ETIM 2.0	EC000901	ETIM 3.0	EC000901
ETIM 4.0	EC000491	UNSPSC	30-21-18-11
eClass 4.1	27-14-03-05	eClass 5.1	27-14-03-05
eClass 6.0	27-14-03-05		

**W-series terminal with clamping yoke connection  
WPE 35**

Weidmüller Interface GmbH & Co. KG  
Klingenbergstraße 16  
D-32758 Detmold  
Germany  
Fon: +49 5231 14-0  
Fax: +49 5231 14-2083  
www.weidmueller.com

**Technical data**

**Approvals**

Approvals



**Product information**

Note, technical data	The tightening torque is 4.5 Nm for 16 - 50 mm <sup>2</sup> and AWG 6 - 2/7 solid conductors. A TS 35x15 (2.3mm steel) should be used with at least 1.8 Nm torque for wires of 25, 35 and 50mm <sup>2</sup> .
Note, accessories	Rail support for insulated installation of terminal rail "SH 2" order no. 0494920000 (10 pcs)

**Downloads**

DXF	<a href="#">09238_WPE_35_DXF.dxf</a>
STEP	<a href="#">1010500000_09238_WPE_35_STP.stp</a>
<a href="#">3-D model</a>	

**W-series terminal with clamping yoke connection  
WPE 35**

Weidmüller Interface GmbH & Co. KG  
Klingenbergstraße 16  
D-32758 Detmold  
Germany  
Fon: +49 5231 14-0  
Fax: +49 5231 14-2083  
www.weidmueller.com

**Drawings**

