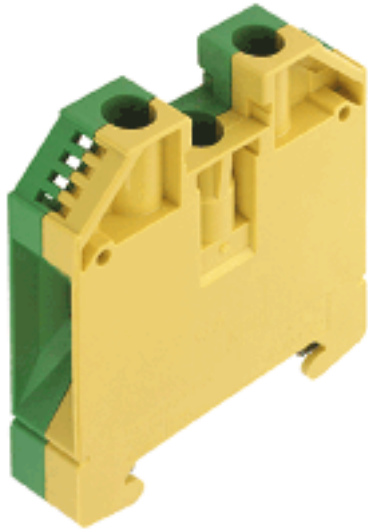


**W terminal earth terminal
WPE 16**

Weidmüller Interface GmbH & Co. KG
Klingenbergstraße 16
D-32758 Detmold
Germany
Fon: +49 5231 14-0
Fax: +49 5231 14-2083
www.weidmueller.com



The PE terminals are available in two designs: standard and compact (N), with rated cross-section from 1.5 mm² to 150 mm² (e.g. 2.5 mm² – WPE 2.5 or 4 mm² – WPE 4N).

General ordering data

Order No.	1010400000
Type	WPE 16
Version	W terminal earth terminal, Earth terminal, Rated cross-section: 16 mm ² , Screw connection, Direct mounting
GTIN (EAN)	4008190126674
Qty.	50 pc(s).

**W terminal earth terminal
WPE 16**

Weidmüller Interface GmbH & Co. KG
 Klingenbergstraße 16
 D-32758 Detmold
 Germany
 Fon: +49 5231 14-0
 Fax: +49 5231 14-2083
 www.weidmueller.com

Technical data
Dimensions

Length	56 mm	Width	11.9 mm
Height	62.5 mm	Height of lowest version	63 mm

Temperatures

Operating temperature	Storage temperature
-----------------------	---------------------

Rated data IECEx/ATEX

Certificate No. (ATEX)	KEMA98ATEX1683U	ATEX certificate	KEMA98ATEX1683U_d.pdf
ATEX certificate	KEMA98ATEX1683U_e.pdf	IEC Ex certificate	IECExULD05.0008U_e.pdf
Wire cross section max. (ATEX)	16 mm ²	Voltage, cross-connection	CrossConnectionGuide.pdf
Operating temperature range	For operating temperature range see EC Design Test Certificate / IEC Ex-Certificate of Conformity	Marking EN 60079-7	
Marking ATEX Directive 94/9/EC	II 2 G D		Ex e II

Additional technical data

Explosion-tested version	Yes	Installation advice	Direct mounting
Number of similar terminals	1	Open sides	closed
Type of mounting	Screwed		

CSA ratings data

Certificate No. (CSA)	200039-1888378	Wire cross section max. (CSA)	6 AWG
Wire cross section min. (CSA)	14 AWG		

Clampable wires (rated connection)

Type of connection	Screw connection	Stripping length	16 mm
Blade size	1.0 x 5.5 mm	Connection direction	on side
Number of connections	2	Clamping range, rated connection, min.	1.5 mm ²
Clamping range, rated connection, max.	25 mm ²	Clamping screw	M 5
Tightening torque, min.	2 Nm	Tightening torque, max.	3.6 Nm
Gauge to IEC 60947-1	B7	Wire connection cross section, solid core, max. rated connection	1.5 mm ²
Wire connection cross section, solid core max. rated connection	16 mm ²	Wire connection cross section, stranded, rated connection, min.	1.5 mm ²
Wire connection cross section, stranded, rated connection, max.	25 mm ²	Wire connection cross section, finely stranded, max.	25 mm ²
Wire connection cross-section, finely stranded, min.	1.5 mm ²	Wire connection cross section, finely stranded with wire-end ferrules DIN 46228/1, rated connection, min.	1.5 mm ²
Wire connection cross section, finely stranded with wire-end ferrules DIN 46228/1, rated connection, max.	16 mm ²	Cross-section for connected conductor, finely stranded with wire-end ferrules and plastic collars DIN 46228/4, rated connection, min.	1.5 mm ²
Wire connection cross-section, finely stranded with wire-end ferrules and plastic collars DIN 46228/4, rated connection, max.	16 mm ²		

Dimensions

TS 35 offset	32 mm
--------------	-------

Creation date January 18, 2012 11:19:08 PM CET

**W terminal earth terminal
WPE 16**

Weidmüller Interface GmbH & Co. KG
Klingenbergstraße 16
D-32758 Detmold
Germany
Fon: +49 5231 14-0
Fax: +49 5231 14-2083
www.weidmueller.com

Technical data
Rated data

Rated cross-section	16 mm ²	Rated voltage to adjoining terminal	1,000 V
Rated impulse withstand voltage to adjacent terminal	8 kV	Standards	IEC 60947-7-2
Pollution severity	3		

UL ratings data

Certificate No. (UR)	E60693VOL1SEC38	Conductor size Factory wiring max. (UR)	4 AWG
Conductor size Factory wiring min. (UR)	14 AWG	Conductor size Field wiring max. (UR)	4 AWG

Material data

Material	Wemid	Colour	yellow, green
Flammability class UL 94	V-0		

System specifications

Product family	W terminal earth terminal	Type of connection	Screw connection
Connection direction	on side	Number of levels	1
Number of connections	2	No. of clamping points per level	2
Levels cross-connected internally	No	Mounting rail	TS 35
End cover plate required	No		

PE rating data

Centre screw on PE terminals	M 4	PEN function	Yes
Pollution severity	3	Rated cross-section	16 mm ²
Rated short-time current	1920 A (16 mm ²)	Standards	IEC 60947-7-2
Tightening torque range for fixing screw	1.2...2.4 Nm		

Classifications

ETIM 2.0	EC000901	ETIM 3.0	EC000901
ETIM 4.0	EC000491	UNSPSC	30-21-18-11
eClass 4.1	27-14-03-05	eClass 5.1	27-14-03-05
eClass 6.0	27-14-03-05		

**W terminal earth terminal
WPE 16**

Weidmüller Interface GmbH & Co. KG
Klingenbergstraße 16
D-32758 Detmold
Germany
Fon: +49 5231 14-0
Fax: +49 5231 14-2083
www.weidmueller.com

Technical data

Approvals

Approvals



CURUSEX



IEC EX ATEX



Product information

Note, technical data	For 25mm ² , the TS 35x15 (steel, 1.5mm thick) should be used. Conductor connection H07V-..16 and AWG 6 with tightening torque of 2.0-2.4 Nm.
Note, accessories	Rail support for insulated installation of terminal rail "SH 2" order no. 0494920000 (10 pcs)

Downloads

DXF	09237_WPE_16_DXF.dxf
STEP	1010400000_09237_WPE_16_STP.stp
3-D model	

Data sheet...

**W terminal earth terminal
WPE 16**

Weidmüller Interface GmbH & Co. KG
Klingenbergstraße 16
D-32758 Detmold
Germany
Fon: +49 5231 14-0
Fax: +49 5231 14-2083
www.weidmueller.com

Drawings

