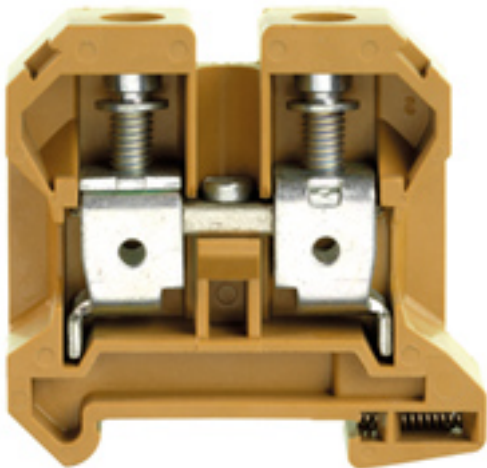


**SAK Series**  
**SAK 35N/35/IK KRG****Weidmüller Interface GmbH & Co. KG**  
Klingenbergstraße 16  
D-32758 Detmold  
Germany  
Fon: +49 5231 14-0  
Fax: +49 5231 14-292083  
www.weidmueller.com

The Weidmüller SAK feed-through terminals satisfy the requirements of IEC 60947-1 and are available with rated cross-sections from 0.08 mm<sup>2</sup> to 240 mm<sup>2</sup>.

**General ordering data**

Order No.	<a href="#">0608320000</a>
Type	SAK 35N/35/IK KRG
GTIN (EAN)	4008190184940
Qty.	20 pc(s).

**SAK Series**  
**SAK 35N/35/IK KRG****Weidmüller Interface GmbH & Co. KG**  
Klingenbergstraße 16  
D-32758 Detmold  
Germany  
Fon: +49 5231 14-0  
Fax: +49 5231 14-292083  
www.weidmueller.com**Technical data****Dimensions and weights**

Length	58 mm	Width	16 mm
Height	60 mm	Height of lowest version	60 mm
Weight	75.55 g	Net weight	74.6 g

**Temperatures**

Operating temperature		Storage temperature	
Continuous operating temp., min.	-60 °C	Continuous operating temp., max.	130 °C

**Additional technical data**

Explosion-tested version	No	Number of similar terminals	1
Open sides	right	Type of mounting	Clamped
Version	Screw connection, for screwable cross-connection, One end without connector		

**CSA ratings data**

Certificate No. (CSA)	154685-1501714	Voltage size C (CSA)	600 V
Current size C (CSA)	120 A	Wire cross section max. (CSA)	2 AWG
Wire cross section min. (CSA)	12 AWG		

**Clampable wires (additional connection)**

Conductor cross-section, flexible plus plastic collar DIN 46228/1, further connection, min.	1.5 mm <sup>2</sup>	Conductor cross-section, flexible plus plastic collar DIN 46228/1, further connection, max.	35 mm <sup>2</sup>
---	---------------------	---	--------------------

**SAK Series**  
**SAK 35N/35/IK KRG**

**Weidmüller Interface GmbH & Co. KG**  
 Klingenbergstraße 16  
 D-32758 Detmold  
 Germany  
 Fon: +49 5231 14-0  
 Fax: +49 5231 14-292083  
 www.weidmueller.com

**Technical data****Clampable wires (rated connection)**

Type of connection	Screw connection	Stripping length	18 mm
Blade size	S4 (DIN 6911)	Connection direction	on side
Number of connections	2	Clamping range, rated connection, min.	2.5 mm <sup>2</sup>
Clamping range, rated connection, max.	50 mm <sup>2</sup>	Clamping screw	M 6
Tightening torque, min.	4 Nm	Tightening torque, max.	6 Nm
Gauge to IEC 60947-1	B8	Wire connection cross section, solid core, max. rated connection	2.5 mm <sup>2</sup>
Wire connection cross section, solid core max. rated connection	16 mm <sup>2</sup>	Wire connection cross section, stranded, rated connection, min.	4 mm <sup>2</sup>
Wire connection cross section, stranded, rated connection, max.	50 mm <sup>2</sup>	Wire connection cross section, finely stranded, max.	35 mm <sup>2</sup>
Wire connection cross-section, finely stranded, min.	2.5 mm <sup>2</sup>	Wire connection cross section, finely stranded with wire-end ferrules DIN 46228/1, rated connection, min.	1.5 mm <sup>2</sup>
Wire connection cross section, finely stranded with wire-end ferrules DIN 46228/1, rated connection, max.	35 mm <sup>2</sup>	Cross-section for connected conductor, finely stranded with wire-end ferrules and plastic collars DIN 46228/4, rated connection, min.	2.5 mm <sup>2</sup>
Wire connection cross-section, finely stranded with wire-end ferrules and plastic collars DIN 46228/4, rated connection, max.	35 mm <sup>2</sup>	Twin wire-end ferrules, min.	1.5 mm <sup>2</sup>
Twin wire-end ferrules, max.	16 mm <sup>2</sup>	Wire connection cross section AWG, min.	AWG 12
Wire connection cross section AWG, max.	AWG 2		

**Rated data**

Rated cross-section	35 mm <sup>2</sup>	Rated voltage	800 V
Rated impulse withstand voltage	8 kV	Rated current	125 A
Current at maximum wires	125 A	Standards	IEC 60947-7-1
Pollution severity	3		

**UL ratings data**

Certificate No. (UR)	E60693VOL1SEC14	Voltage size C (UR)	600 V
Current size C (UR)	100 A	Conductor size Factory wiring max. (UR)	2 AWG
Conductor size Factory wiring min. (UR)	12 AWG	Conductor size Field wiring max. (UR)	2 AWG

**Material data**

Material	KrG	Colour	Medium Yellow
UL 94 flammability rating	V-0, 5VA		

**System specifications**

Product family	SAK Series	Type of connection	Screw connection
Connection direction	on side	Number of levels	1
Number of connections	2	No. of clamping points per level	2
Levels cross-connected internally	No	Mounting rail	TS 35
End cover plate required	Yes		

**SAK Series  
SAK 35N/35/IK KRG**

**Weidmüller Interface GmbH & Co. KG**  
 Klingenbergstraße 16  
 D-32758 Detmold  
 Germany  
 Fon: +49 5231 14-0  
 Fax: +49 5231 14-292083  
 www.weidmueller.com

**Technical data**

**Classifications**

ETIM 2.0	EC000897	ETIM 3.0	EC000897
UNSPSC	30-21-18-11	eClass 4.1	27-14-11-20
eClass 5.1	27-14-11-20	eClass 6.2	27-14-11-20
eClass 7.1	27-14-11-20		

**Product information**

Descriptive text ordering data	It is possible to use twin ferrules with identical rated voltages (LAB 13090).
Descriptive text technical data	The tightening torque is 4.5 Nm for 16 - 50 mm <sup>2</sup> and AWG 6 - 2/7 stranded conductors. Twin wire end ferrules ZH 2.5 - ZH 16 can be used.
Descriptive text accessories	If QIs are aligned side by side, then a TW/AP must be used.

**Approvals**

Approvals



ROHS Conform