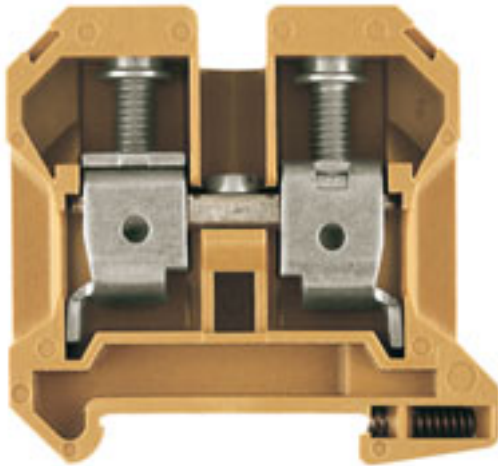


**SAK terminal with screw connection
SAK 35N/35 KRG**

Weidmüller Interface GmbH & Co. KG
Klingenbergstraße 16
D-32758 Detmold
Germany
Fon: +49 5231 14-0
Fax: +49 5231 14-2083
www.weidmueller.com



The Weidmüller SAK feed-through terminals satisfy the requirements of IEC 60947-1 and are available with rated cross-sections from 0.08 mm² to 240 mm².

General ordering data

Order No.	0608220000
Type	SAK 35N/35 KRG
Version	SAK terminal with screw connection, Feed-through terminal, Rated cross-section: 35 mm ² , Screw connection, KrG, Medium yellow, Direct mounting
GTIN (EAN)	4008190126278
Qty.	20 pc(s).

**SAK terminal with screw connection
SAK 35N/35 KRG**

Weidmüller Interface GmbH & Co. KG
 Klingenbergstraße 16
 D-32758 Detmold
 Germany
 Fon: +49 5231 14-0
 Fax: +49 5231 14-2083
 www.weidmueller.com

Technical data**Dimensions**

Length	58 mm	Width	16 mm
Height	60 mm	Height of lowest version	60 mm
Weight	76.25 g		

Temperatures

Operating temperature	Storage temperature
-----------------------	---------------------

Additional technical data

Explosion-tested version	No	Installation advice	Direct mounting
Number of similar terminals	1	Open sides	right
Type of mounting	Clamped	Version	Double terminal

CSA ratings data

Certificate No. (CSA)	154685-1501714	Voltage size C (CSA)	600 V
Current size C (CSA)	120 A	Wire cross section max. (CSA)	2 AWG
Wire cross section min. (CSA)	12 AWG		

Clampable wires (additional connection)

Conductor cross-section, flexible plus plastic collar DIN 46228/1, further connection, min. 1.5 mm ²	Conductor cross-section, flexible plus plastic collar DIN 46228/1, further connection, max. 35 mm ²
---	--

Clampable wires (rated connection)

Type of connection	Screw connection	Stripping length	18 mm
Blade size	6.5 x 1.2 mm	Connection direction	on side
Number of connections	2	Clamping range, rated connection, min.	2.5 mm ²
Clamping range, rated connection, max.	50 mm ²	Clamping screw	M 6
Tightening torque, min.	4 Nm	Tightening torque, max.	5 Nm
Gauge to IEC 60947-1	B8	Wire connection cross section, solid core, max. rated connection	2.5 mm ²
Wire connection cross section, solid core max. rated connection	16 mm ²	Wire connection cross section, stranded, rated connection, min.	4 mm ²
Wire connection cross section, stranded, rated connection, max.	50 mm ²	Wire connection cross section, finely stranded, max.	35 mm ²
Wire connection cross-section, finely stranded, min.	2.5 mm ²	Wire connection cross section, finely stranded with wire-end ferrules DIN 46228/1, rated connection, min.	1.5 mm ²
Wire connection cross section, finely stranded with wire-end ferrules DIN 46228/1, rated connection, max.	35 mm ²	Cross-section for connected conductor, finely stranded with wire-end ferrules and plastic collars DIN 46228/4, rated connection, min.	2.5 mm ²
Wire connection cross-section, finely stranded with wire-end ferrules and plastic collars DIN 46228/4, rated connection, max.	35 mm ²	Twin wire-end ferrules, min.	1.5 mm ²
Twin wire-end ferrules, max.	16 mm ²	Wire connection cross section AWG, min.	AWG 12
Wire connection cross section AWG, max.	AWG 2		

SAK terminal with screw connection SAK 35N/35 KRG

Weidmüller Interface GmbH & Co. KG
Klingenbergstraße 16
D-32758 Detmold
Germany
Fon: +49 5231 14-0
Fax: +49 5231 14-2083
www.weidmueller.com

Technical data

Rated data

Rated cross-section	35 mm ²	Rated voltage	800 V
Rated impulse withstand voltage	8 kV	Rated current	125 A
Current at maximum wires	125 A	Standards	IEC 60947-7-1
Pollution severity	3		

UL ratings data

Certificate No. (UR)	E60693VOL1SEC14	Voltage size C (UR)	600 V
Current size C (UR)	100 A	Conductor size Factory wiring max. (UR)	2 AWG
Conductor size Factory wiring min. (UR)	12 AWG	Conductor size Field wiring max. (UR)	2 AWG

Material data

Material	KrG	Colour	Medium yellow
Flammability class UL 94	V-0		

System specifications

Product family	SAK terminal with screw connection	Type of connection	Screw connection
Connection direction	on side	Number of levels	1
Number of connections	2	No. of clamping points per level	2
Levels cross-connected internally	No	End cover plate required	Yes

Classifications

ETIM 2.0	EC000897	ETIM 3.0	EC000897
ETIM 4.0	EC000897	UNSPSC	30-21-18-11
eClass 4.1	27-14-11-20	eClass 5.1	27-14-11-20
eClass 6.0	27-14-11-20	eClass 7.0	27-14-11-20

Product information

Descriptive text ordering data	It is possible to use twin ferrules with identical rated voltages (LAB 13090).
Descriptive text technical data	The tightening torque is 4.5 Nm for 16 - 50 mm ² and AWG 6 - 2/7 stranded conductors. Twin wire end ferrules ZH 2.5 - ZH 16 can be used.
Descriptive text accessories	If QIs are aligned side by side, then a TW/AP must be used.

Approvals

Approvals



Downloads

STEP [0608220000_07022_SAK_35N-35_KRG_STP.stp](#)